

President's Message

National Central University (NCU) is a university with long-standing traditions in Taiwan. Founded in Nanjing in 1915, it was re-established in Taiwan in 1962. NCU is now one of the top universities in the country. Located in Zhongli, it covers an area of 62 hectares. We have approximately 12,000 students, 9 colleges, 28 departments (including 5 interdisciplinary undergraduate programs), 18 graduate institutes, 6 university-level research centers, one united research center, the Office of Teaching Centers and the affiliated Zhongli Senior High School. NCU is truly a comprehensive university that combines rich science and humanistic facilities.

The era develops and changes rapidly; the cultivation of talents' key capabilities has become our biggest challenge. In addition to spreading knowledge, NCU channels its academic energy to local development to effectively shoulder its social responsibilities and displays its values and functions of a university. NCU is a student-centered university that considers the education of liberal arts and specialization in professions. We endeavor to empower our students with professional capabilities, to develop creative teaching and learning modes, and to help teachers get involved more proactively. With the solid foundation of international exchange and cooperation, we encourage our students to go abroad, broaden their horizons, and increase their international mobility with actual practice on the tide of globalization.

Covered by shadows of pine trees, our campus is quiet and beautiful. While the green economy is being promoted around the world, "sustaining social development and improving human welfare" are the essential educational purposes of NCU. In the meantime, we established the first Kunqu Museum in Taiwan, exhibiting rich resources in the field of humanities and creating rich opportunities for conversations between arts and technology. Concerning student aid, we also offer supports including grants and academic counseling to create the opportunities for disadvantaged students to move up on the social classes.

"Sincerity in knowledge; simplicity in life" is the motto of NCU, and it is the spirit that we expect all our students to keep lifelong in mind. In addition to achieving outstanding performances in their professions, students should be able to think reflexively, fit into the society maturely and considerately, and keep the sincere attitude of NCU. We aim to lead our faculty and students to create a learning environment with both strong humanistic concerns and academic research on this beautiful and culturally-rich campus, to provide students with global vision and diverse learning experiences, and to become one of the world's top universities with unique characteristics.

President

Jing-Yang Jou

Schools and Colleges

Faculty members and researchers: approx. 1227
Number of students: approx. 12000

College of Liberal Arts

Interdisciplinary Program of Liberal Arts
Department of Chinese Literature
Department of English
Department of French Language and Literature
Graduate Institute of Philosophy
Graduate Institute of Art Studies
Graduate Institute of History
Graduate Institute of Learning and Instruction
International Master's Program in Inter-Asia Cultural Studies (University System of Taiwan)
Center for Teacher Education

College of Science

Joint Science Program, College of Science
Department of Physics
Department of Mathematics
Department of Chemistry
Department of Optics and Photonics
Graduate Institute of Statistics
Graduate Institute of Astronomy
International Ph.D. Program in Photonics (University System of Taiwan)

College of Engineering

Interdisciplinary Program of Engineering
Department of Chemical and Materials Engineering
Department of Civil Engineering
Department of Mechanical Engineering
Graduate Institute of Energy Engineering
Graduate Institute of Environmental Engineering
Graduate Institute of Materials Science and Engineering

School of Management

Department of Business Administration
Department of Information Management
Department of Finance
Department of Economics
Graduate Institute of Accounting
Graduate Institute of Industrial Economics
Graduate Institute of Human Resource Management
Graduate Institute of Industrial Management
International MBA Program
Executive MBA Program

College of Hakka Studies

Department of Hakka Language and Social Sciences
Graduate Institute of Law and Government



College of Electrical Engineering and Computer Science

Interdisciplinary Program of Electrical Engineering and Computer Science
Department of Electrical Engineering
Department of Computer Science and Information Engineering
Department of Communication Engineering
Graduate Institute of Network Learning Technology
International Graduate Program in Artificial Intelligence

College of Earth Sciences

Interdisciplinary Program of Earth System Science
Department of Earth Sciences
Department of Atmospheric Sciences
Department of Space Science and Engineering
Graduate Institute of Applied Geology
Graduate Institute of Hydrological and Oceanic Sciences
International Ph.D. Graduate Program for Earth System Science

College of Health Sciences and Technology

Department of Life Sciences
Graduate Institute of Cognitive Neuroscience
International Ph.D. Program in Interdisciplinary Neuroscience (University System of Taiwan)
International Ph.D. Program in Interdisciplinary Neuroscience
Department of Biomedical Sciences and Engineering

Graduate College of Sustainability and Green Energy

Master/Ph.D. Programs, Sustainability in Decarbonization
Master/Ph.D. Programs, Sustainability in Green Energy
Master/Ph.D. Programs, Sustainability Leadership

Office of Teaching Centers

Center for General Education
Language Center
Office of Physical Education

Center for Space and Remote Sensing Research

Master of Science Program in Remote Sensing Science and Technology
International Ph.D. Program in Environmental Science and Technology (University System of Taiwan)

About NCU

[Our Missions]

- Emphasizing both professional skills and liberal arts education; cultivating the leadership in students
- Leading knowledge innovation; pursuing academic excellence
- Developing a sustainable society; enhancing the welfare of humankind

Aiming for being the world's top university with deep humanistic concerns

[Functional Research Center]

Strengthen research energy, increase international competitiveness, and enhance domestic industrial advantage.

- Earthquake Disaster & Risk Evaluation and Management Research Center
- Center for High Energy and High Field Physics
- Center for Environmental Monitoring and Technology
- Cognitive Intelligence and Precision Healthcare Research Center
- Center for National Defense Technology and Research



[Plowing Deep in the Field of Education]

Innovating and Enhancing Teaching

NCU utilizes ideaNCU Creative Park as a foundation to implement cross-disciplinary integration and self-directed diverse learning.

Fulfilling Social Responsibility

Connecting local trans-disciplinary collaboration with USR and becoming a leading academic institution driving social inclusivity and sustainability.

Industry-Academia Cooperation and Connections

Expanding industry-academia networks, cultivating portable skills, and connecting domestic and international job markets.

Enhancing the Public Nature of Higher Education

Providing students with diverse learning, counseling, and grants to support them in their learning, financing, life, and career.

International Key Fields—Sustainable Development Fields

Enhancing global influence by focusing on sustainable development in earth sciences, engineering, electrical engineering & computer science, and health sciences & technology.

President's Message / Schools and Colleges



2023.10

About NCU

誠樸



國立中央大學

National Central University

校長的話

中央大學為國內少數歷史悠久之大學，民國四年創建於南京，民國五十一年在台復校，為國內頂尖大學之一。位於中壢雙連坡上的中大佔地62公頃，學生人數約一萬兩千人，設有9個學院，大學部23個學系、5個學士班、18個獨立所，同時設有6個校屬研究中心、1個聯合研究中心和總教學中心，及附屬中壢高級中學，是一所科學、人文薈萃的綜合大學。



時代發展變遷迅速，人才關鍵能力的培育成為我們將面臨的最大挑戰。除了知識的傳授之外，更將學術研究能量鏈結區域發展，有效地擔負社會責任，發揮大學的價值功能。以學生為本，兼顧博雅專精，厚植基礎能力並且發展創新教學模式，協助教師積極投入。在全球化的浪潮下，以本校在國際交流的良好基礎，積極鼓勵學生走出台灣、增進視野，用具體實踐提升國際移動力。

中大蒼松成蔭、環境清幽，在全球推動綠色經濟之際，「永續社會發展，增進人類福祉」為中大重要辦學目標，利用校內固有資源，打造友善地球綠色校園。同時，中大設立了全台首座崑曲博物館，展現人文領域的豐厚資源，使師生在藝文及科技間有了對話機會。助學方面，也提供獎學金以及課業輔導等協助，為弱勢學生創造向上流動的機會。

「誠於學問，樸於人生」做為中大的校訓，也是冀望學生能夠一生謹記的精神，除了在自己的專業領域上表現優異，更希望學生能夠具備反思自身價值的能力，且成熟、包容地融入社會，落實中大人樸實的特質。我們期許能夠帶領本校師生在這個景色優美且擁有深厚文化底蘊之校園，建構出人文關懷及學術研究並重的環境，提供給學生國際化且多元的學習體驗，成為一所極具特色的世界一流大學。

校長

周景揚

辦學使命

兼顧博雅專精 培養領導人才
引領知識創新 追求學術卓越
永續社會發展 增進人類福祉

期許做為深具人文關懷的世界一流大學

院系組織

文學院

文學院學士班
中國文學系
英美語文學系
法國語文學系
哲學研究所
藝術學研究所
歷史研究所
學習與教學研究所
亞際文化研究國際碩士學位學程 (台灣聯合大學系統)
師資培育中心

理學院

理學院學士班
物理學系
數學系
化學學系
光電科學與工程學系
統計研究所
天文研究所
光電博士學位學程 (台灣聯合大學系統)

工學院

工學院學士班
化學工程與材料工程學系
土木工程學系
機械工程學系
能源工程研究所
環境工程研究所
材料科學與工程研究所

管理學院

企業管理學系
資訊管理學系
財務金融學系
經濟學系
會計研究所
產業經濟研究所
人力資源管理研究所
工業管理研究所
國際經營管理碩士學位學程
管理學院高階主管企管碩士班

資訊電機學院

資訊電機學院學士班
電機工程學系
資訊工程學系
通訊工程學系
網路學習科技研究所
人工智慧國際碩士學位學程

地球科學學院

地球科學學院學士班
地球科學學系
大氣科學學系
太空科學與工程學系
應用地質研究所
水文與海洋科學研究所
地球系統科學國際研究生博士學位學程

客家學院

客家語文暨社會科學學系
法律與政府研究所

生醫學院

生命科學系
認知神經科學研究所
跨領域神經科學博士學位學程 (台灣聯合大學系統)
跨領域神經科學國際研究生博士學位學程
生醫科學與工程學系

永續與綠能科技學院

永續去碳科技碩／博士學位學程
永續綠能科技碩／博士學位學程
永續領導力碩／博士學位學程

總中心

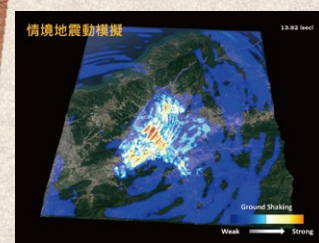
通識教育中心
語言中心
體育室

太空及遙測研究中心

遙測科技碩士學位學程
環境科技博士學位學程 (台灣聯合大學系統)

功能性校級研究中心

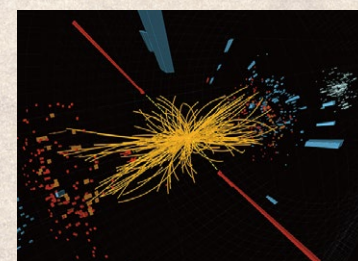
厚實研究能量·增進國際競爭力
提高國內產業優勢



震波模擬技術輔助都會與科學園區防災應用

[高能與強場物理研究中心]

研究領域包括粒子物理實驗與理論、重力波實驗、重力理論、強場物理、雷射電漿交互作用等方面。中心整合了國內在這些領域的研究人員，形成一個具有國際競爭力的團隊，在許多研究課題上獨步亞洲，部分更臻世界領先水準。



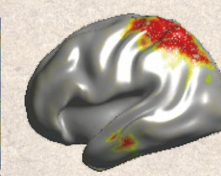
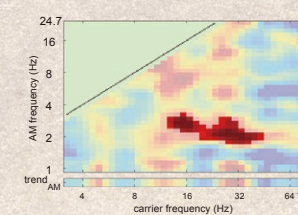
中大高能物理團隊對CMS實驗於2012年發現的希格斯粒子有所貢獻。



環保署與國立中央大學合作設立「環境監測技術聯合中心」，於2016年舉辦揭牌儀式。

[認知智慧與精準健康照護研究中心]

整合認知神經、腦科學及生醫科學，並加入非線性動態分析方法與人工智慧等，探究人類認知與生理功能及相關疾病，以提供預防、早期偵測和個人化治療等精準健康照護解決方案。



整合性非線性動態分析方法，可精確解析生理與腦波訊號，提供精準健康照護解決方案。

[國防科技研究中心]

秉持中大在各項專業領先的基礎上，深耕「海洋戰場環境經營與探測」、「水下戰場環境整合」、「太空衛星運用科研」、「高頻遠距離通訊」等領域，完成軍事科研項目，培育傑出科學、工程技術人員，支持國防自主政策。



國防科技研究中心揭牌成立。

深耕教育

- 教學創新精進
- 善盡社會責任
- 產學合作連結
- 提升高教公共性
- 國際重點領域—永續發展領域

來校指引

國道1號(中山高速公路)

中壢交流道(62公里)出口，往新屋方向行駛，沿民族路至三民路右轉，中正路左轉，中大路左轉即可抵達本校前門。車程約5~10分鐘。

GPS衛星導航

北緯24.96828；東經121.195474
中壢火車站、客運站、高鐵桃園站均有公車路線行經中大。詳閱本校網站。

聯絡資訊

地址 320317桃園市中壢區中大路300號
No. 300, Zhongda Rd., Zhongli District, Taoyuan City 320317, Taiwan (R.O.C.)

電話 03-422-7151

傳真 03-425-3650



中央大學網站



臉書粉絲專頁



IG專頁



推特專頁



112年10月

深耕教育／功能性校級研究中心／來校指引／聯絡資訊

Sincerity
And
Simplicity



國立中央大學
National Central University

校長的話／辦學使命／院系組織